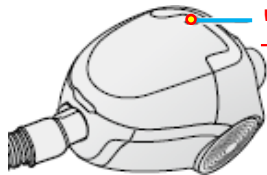


Instructions for Vacuum Cleaner (Toshiba)

Buttons:



For new paper bags: make sure to buy "VPF-7":

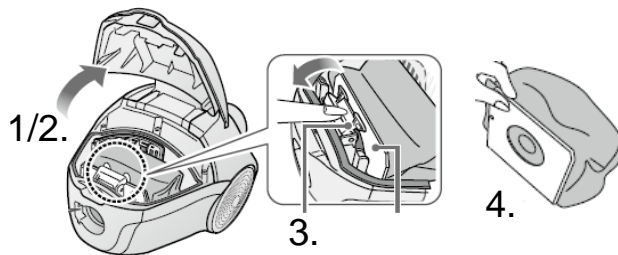


"Paper-bag is full"-warning lamp:

To check:

1. Make sure head is attached
2. Power ON with "**Strong**" power, lift up head from floor, and check lamp on machine
3. - If lamp is OFF: OK, no need to change yet
- If lamp flashes: change bag soon
- **If lamp is ON: change bag ASAP**

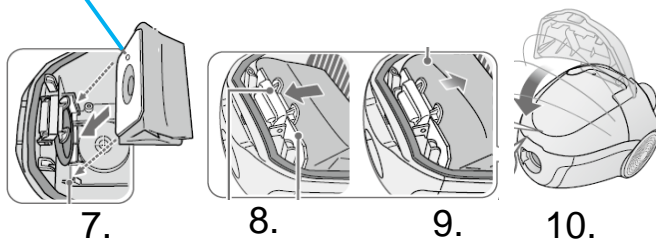
How to change paper bag:



How to remove old bag:

1. Remove hose
2. Open cover
3. Pull hook on bag
4. Pull bag out and dispose

6. (Small hole in bag)

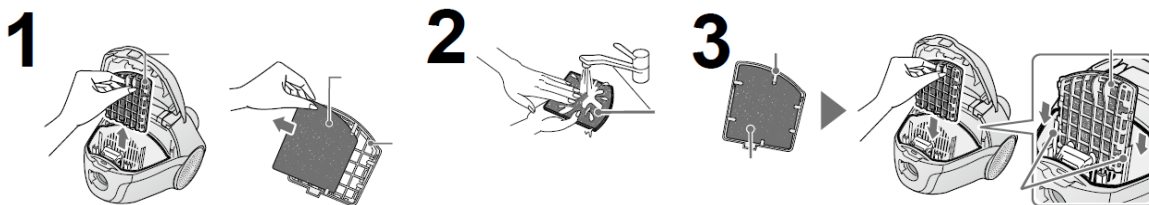


How to insert new bag:

6. Make sure small hole is facing like in picture
7. Insert new bag and make sure it is attached fully on bottom
8. Attach hooks
9. Fold out bag
10. Close cover

Instructions for Vacuum Cleaner (Toshiba)

Cleaning of Exhaust Filter (once-in-a-while):



Please wash filter once in a while, or if **paper-bag-full-warning-lamp** does not go away after changing bag, please wash exhaust filter:

1. Open cover, take out filter, remove filter from frame
2. Wash in water and dry fully (in shade)
***Do not put back while still wet, make sure it is fully dry**
3. Attached filter again to frame (6 hooks), and put back and close cover